

836 ROCHE POINT DRIVE

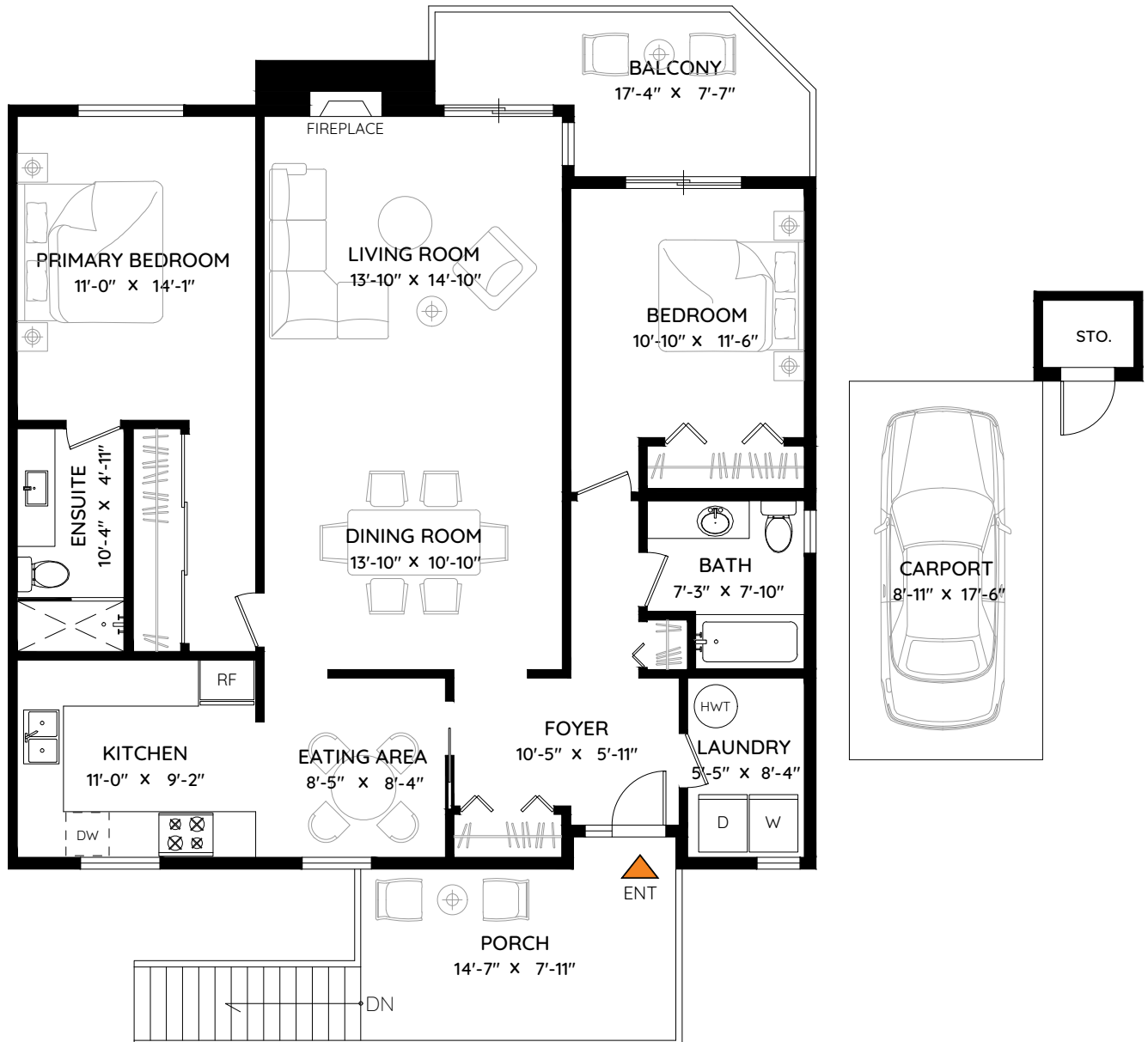
NORTH VANCOUVER, BC



CHRIS LANGLOIS

Real Estate Advisor

LIVING AREA	1,279 SQ.FT.
CEILING HEIGHT	8'-0"
CARPORT	156 SQ.FT.
BALCONY	111 SQ.FT.
PORCH	172 SQ.FT.
TOTAL	439 SQ.FT.



0 ft 3 ft 5 ft



The floor plan and measurements are approximate, typically within +/- 2%. These are intended strictly for advertising purposes. They may encompass unfinished areas and are not intended for architectural or construction applications. There may be variances in the numbers if there were restrictions on property access or if taking precise measurements at the time of measuring isn't feasible. E&O Insured.